

Model No.: **GP24C**

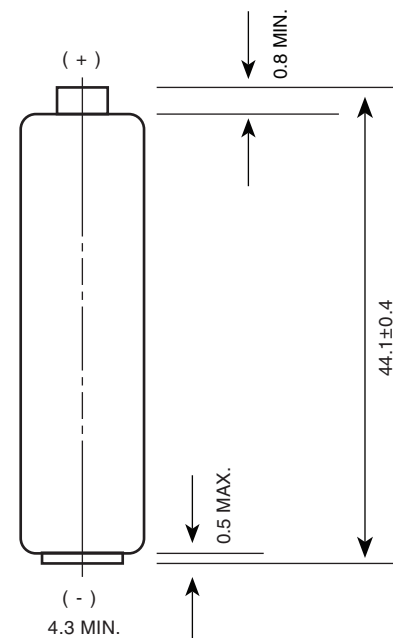
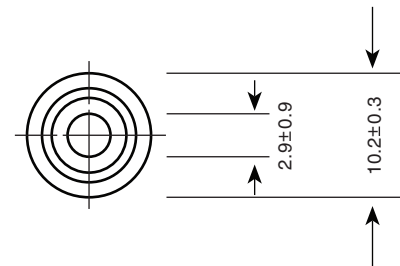
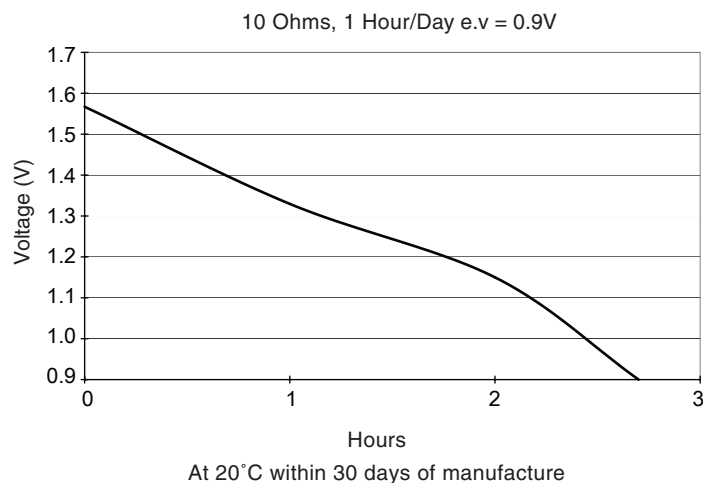
<b>NO MERCURY ADDED</b>	
<b>Description</b>	: Heavy Duty Battery, AAA Size
<b>Chemical System</b>	: Carbon Zinc
<b>Nominal Voltage</b>	: 1.5 Volts
<b>Nominal Dimensions</b>	: $\varnothing 10.5$ mm x 44.5 mm
<b>Terminals</b>	: Protruded positive (+) and flat negative (-) contacts
<b>Jacket</b>	: Printed tube
<b>Applications</b>	: All electronic devices, e.g. toys, data banks, audio appliances, calculators, remote controls, paging machines.
<b>Warranty Period</b>	: 24 months
<b>Average Weight</b>	: 7.8g

### Cross References:

GP	JIS	IEC
24C	R03	R03

### Typical Service Life:

Discharge Resistance	Discharge Condition	End Point Voltage	Service Life
10 Ohms	1 Hr/ Day	0.9V	2.7 Hrs



Unit : mm

The information (subject to change without prior notice) contained in this document is for reference only and should not be used as a basis for product guarantee or warranty. For applications other than those described here, please consult your nearest GP Sales and Marketing Office or Distributors.